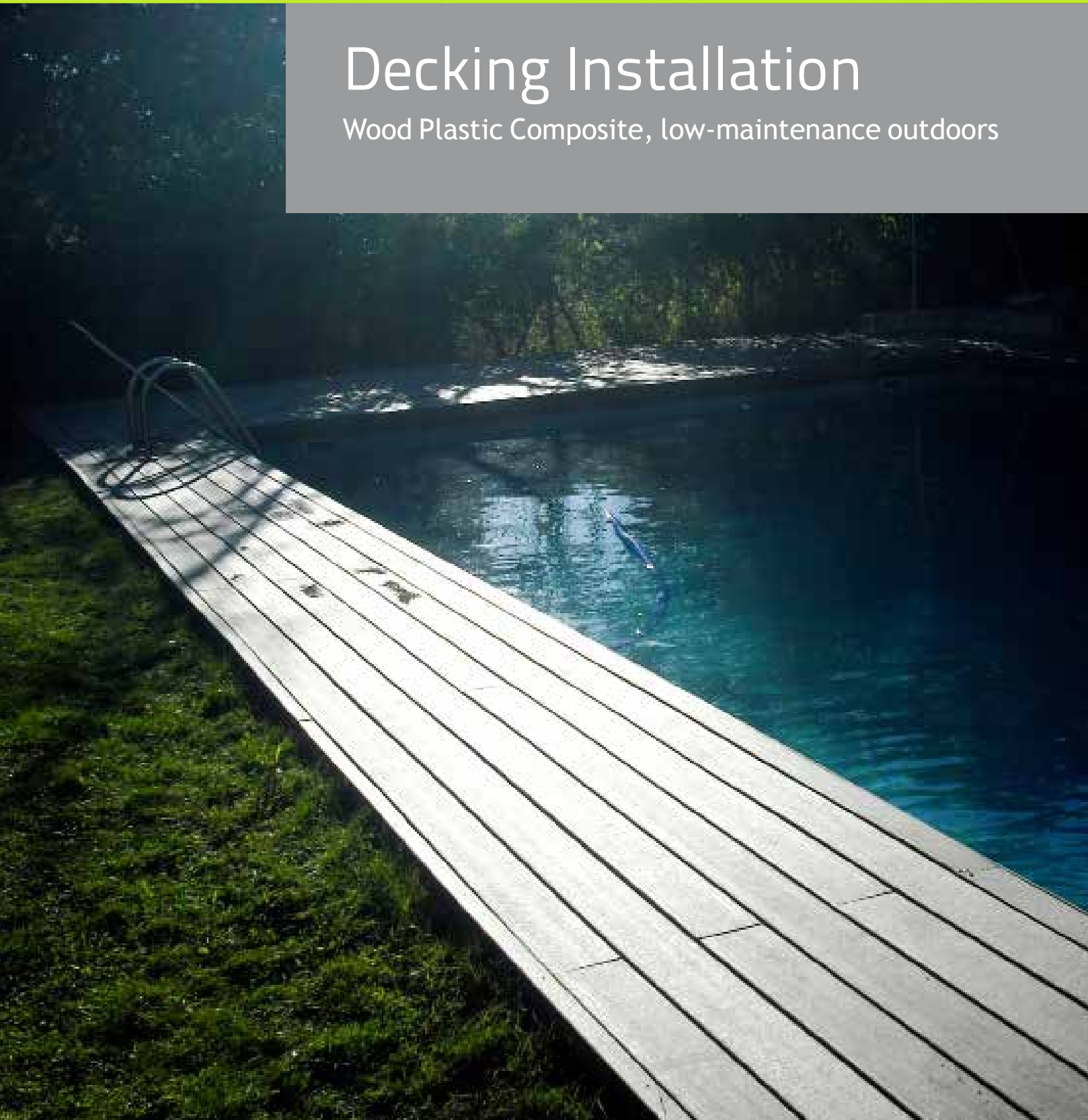


# Decking Installation

Wood Plastic Composite, low-maintenance outdoors



# Wood Plastic Composite, ecological and low-maintenance

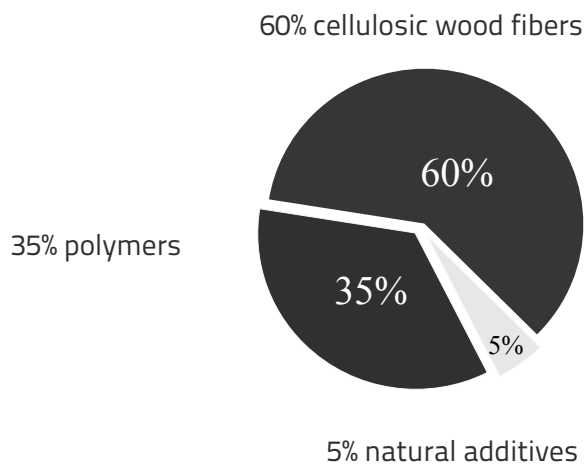


## Unique Properties

While the wood fibers create a natural finish, the polymer base provides outdoor durability.

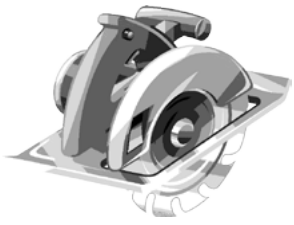
Nature and technology joined as the foundation of its hardness.

## nature + technology



## Tools

The Wood Plastic Composite is a material that it is manipulated in the same way as traditional wood. You can cut, polishing, sawing, screwing and nailing, without special tools.



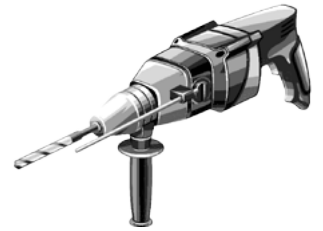
circular saw



keyhole saw



electric screwdriver



electric drill

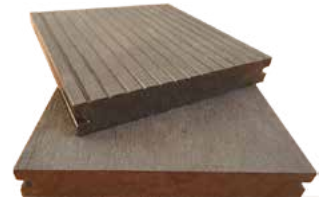
## Materials



Decking Board NeoRock  
13,5 x 2,5 x 220 cm



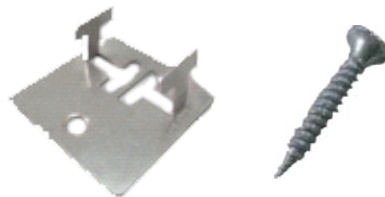
Decking Board NeoTeck  
15 x 2,5 x 220 cm



Decking Board NeoPack  
14,6 x 2,2 x 220 cm



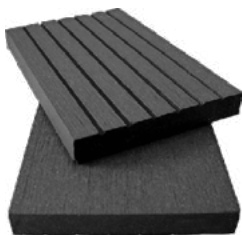
Hollow Joist  
4 x 3 x 220 cm



Steel Stainless Clip  
included screw



Plastic Clip  
included screw



End Cover 7  
7 x 1 x 220 cm



End Cover 9 9 x 0,8 x 220 cm  
End Cover 13 13,5 x 0,8 x 220



End Cover L  
5 x 5 x 220 cm

## 1 Before to install

### Get Ready the soil

- » Installations must be on firm and compact soil (concrete, terrazzo, stone ...). If the soil is sandy or grass is necessary to take a concrete layer before to put the joist.
- » It is recommended that a drop of 0.5% to avoid water stagnation.

### Recommendations

- » Storing boards, joist and rest of elements in a dry place, always supported horizontally on flat supports which should be uniformly distributed.
- » For your safety, always use safety glasses and gloves during the assembly process.

To follow a good method of installation is critical to achieve satisfactory results in the finish.

We should focus on:

- » The distance between the joist should be approximately 35 cm. A distance more than 40 cm is not recommended.
- » In the connexion between the longitudinal ends of two decking boards must be installed a main joist to support them.



To leave a perfect finish can be placed end covers in the sides or visible extremes.



## 3 steps to install

### 2 To hold the joist

Place the joist on the soil , firm and dry, with a distance between them of 35 cm center to center .

To consider the expansion of the material , is recomendable to leave a distance of 4 mm . in the meeting of two joist in the longitudinal ends.



- » The joists allow to level a sloping floor . Can be used wedges as a lifting elements.

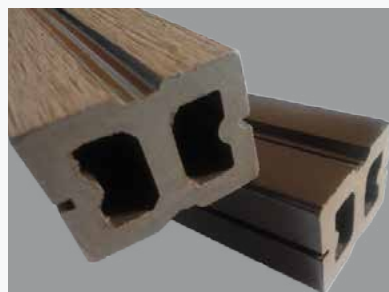


Make several holes in the joist with a electric drill. It is better to use a drill is doing smaller holes than the screw that are used to hold the joist to the soil

If it can not be screwed to the base, because there is a mesg or similar fabric , the strips can be adhered to the floor using polyurethane addesive.



- » For optimum adhesion to the pavement and to the boards is better to use joist with rough surface. The joist Neoture have sanded finish both sides.
- » In addition, using Wood Plastic Composite joist prevent moisture and other conditions which can deteriorate the base.





### 3 Fixing the decking boards

Set the decking boards to the joist using hidden clips system. Use an electric screwdriver to fasten by stainless steel screws included in the kit.

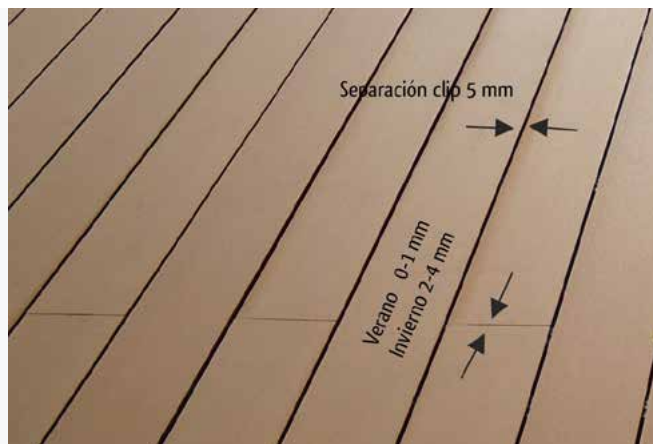


- » The profiles are perfectly fixed through the effect of the pressure exerted by the clip left and right
- » For proper anchoring is essential to use the clip model provided by the supplier.

The distance in between boards is determined by the clip, it is normally 5 mm.

It is important to note the expansion in the longitudinal ends of the boards. The boards expand or contract depending on temperature and weather conditions in the time of installation.

- » **Summer:** is recommended to leave a gap of 0-1 mm if the assembly is in Summer (direct incidence of sunlight) when profiles are more dilated.
- » **Winter:** At low temperatures profiles are contracted in longitudinal extremes In this case, have to leave a gap of **2-4 mm**.



- » Fixing system with hidden clips achieve an aesthetic finish, safe and without risk.
- » Furthermore, ensures ventilation of the pavement and allows drainage of the water underneath the surface.







[www.neoture.es/en/](http://www.neoture.es/en/)



C/Plata, 7  
P.I. El Olivar  
28500 · Arganda del Rey  
MADRID  
SPAIN  
+34 918729522

C/Agustín Escardino, 9  
Parc Científic UV  
46980 · Paterna  
VALENCIA  
SPAIN  
+34 961132734